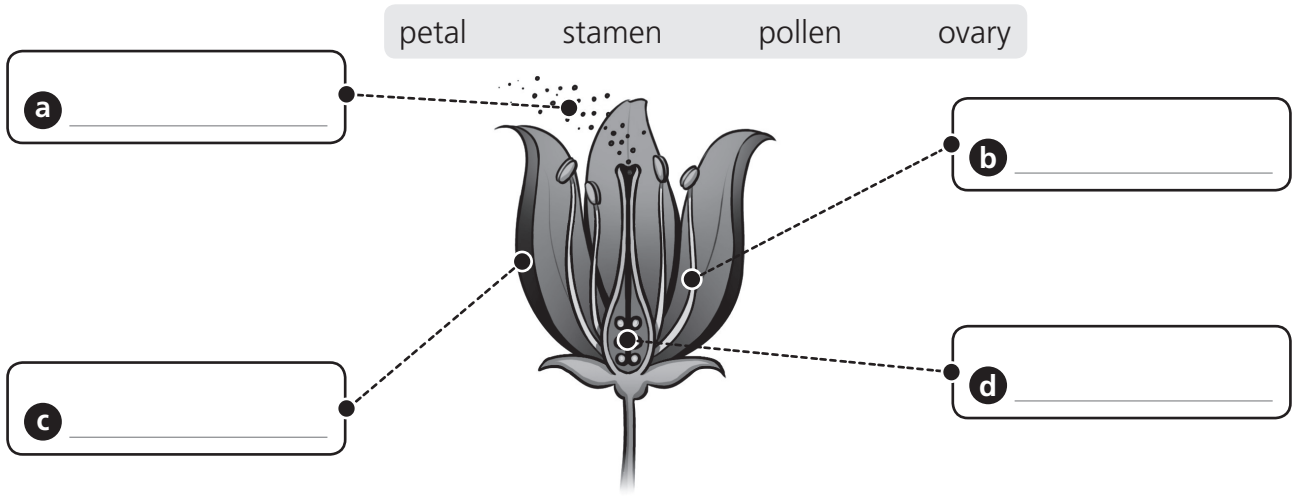


**UNIT 4** DIAGNOSTIC TEST

Name: \_\_\_\_\_

Class: \_\_\_\_\_

**1** Label the picture with the words in the box.



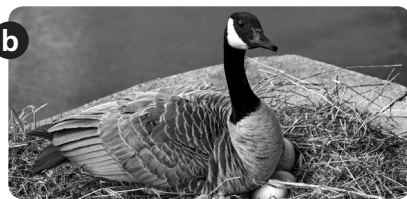
**2** Circle the correct words to complete the sentences.

- a** The **stems** / **roots** absorb water and minerals.
- b** The green substance in **leaves** / **roots** is called chlorophyll.
- c** The leaves absorb energy from the **Sun** / **soil**.
- d** The **leaves** / **stems** transport food to all parts of the plant.
- e** **Solar** / **Wind** energy transforms raw sap into elaborated sap using **carbon dioxide** / **oxygen** from the air.

**3** Unjumble the letters to label the vertebrate animal groups.



m p h i b a n s i a



r d i s b



l m m m a a s



s h f i



p r t e i s l e

**4** Tick (✓) the true sentences.

- a All vertebrates have a backbone.
- b Grasses have thick stems called trunks.
- c Bushes and trees have branches.
- d Most reptiles lay eggs.
- e Most mammals have feathers to keep warm.
- f Mammals are the only viviparous animals.
- g Reptiles do not eat plants.

**5** Match to make true sentences.

Animals which eat plants are	• viviparous.
Animals which eat other animals are	• herbivores.
Animals which lay eggs are	• carnivores.
Animals which eat plants and animals are	• oviparous.
Animals which give birth are	• omnivores.

**6** Read the sentences. Write T (true) or F (false)

- a Cephalopods, like octopuses, have tentacles.
- b Most starfish have three arms.
- c Gastropods, like snails, have four legs.
- d Annelids, like earthworms, have segmented bodies.
- e Sponges have a long, soft body.
- f Cnidarians, like jellyfish, are land animals.